

# PROFESSIONAL-CLASS DOOR FINISHES

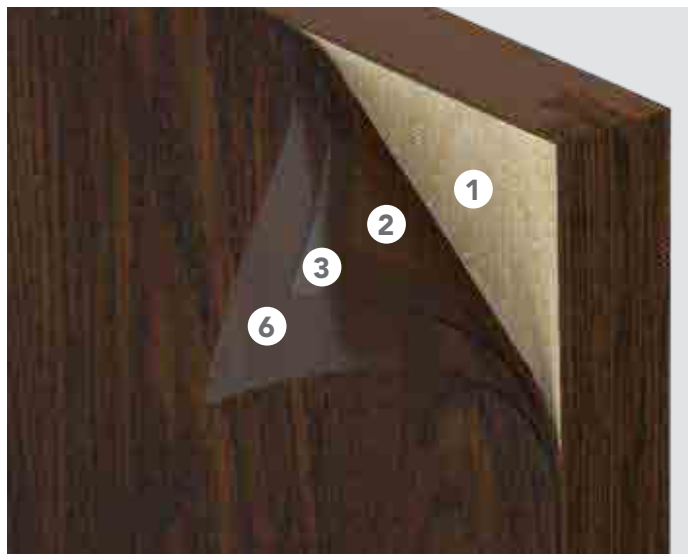
---

**Applied with care, by professionals.** If you buy an entry system and finish it yourself, chances are it's the first door you've ever painted or stained. At ProVia®, stains are hand-applied by professional craftsmen, many who have been perfecting their work for years.



# EMBARQ® & SIGNET® STAIN FINISHES

## 7-STEP STAIN FINISHING SYSTEM



1. **DURAFUSE™** - Proprietary P<sup>3</sup> Fusion Preparation Processes ensuring unprecedented finish durability
2. **HAND-APPLIED STAIN FINISH** formulated exclusively for Signet fiberglass doors
3. A layer of 2-part urethane, catalyst-hardened **CLEAR COAT WITH UV INHIBITORS** is applied
4. Clear coat is **OVEN-CURED** for lasting durability
5. The door is **HAND-SANDED**, preparing the surface for the second layer of clear coat
6. A second layer of 2-part urethane, catalyst-hardened **CLEAR COAT WITH UV INHIBITORS** is applied
7. The door is **OVEN-CURED** a second time, creating a long-lasting, durable finish

### Cherry & Mahogany Stains *(shown on Cherry)*



Cider



Toffee



American Cherry



Natural Bark



Nutmeg



Hazelnut



Cinnamon

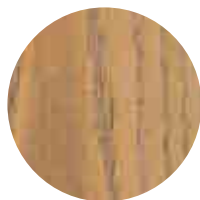


Coffee Bean



Ebony

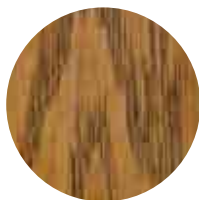
### Oak, Knotty Alder & Fir Stains *(shown on Oak)*



Roasted Cashew



Honey Wheat



Almond



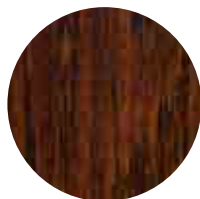
Ginger



Caramel



English Chestnut



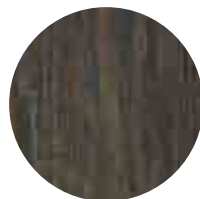
Truffle



Aged Barrel



Espresso



Urban Barnwood



Ebony

# EMBARQ® & SIGNET® GLAZED FINISHES

Distinctive beauty achieved through a creative hand-applied finish giving each door a unique aged look.

## 9-STEP GLAZED FINISHING SYSTEM



1. **DURAFUSE™** - Proprietary P<sup>3</sup>Fusion Preparation Processes ensuring unprecedented finish durability
2. A 2-part urethane, catalyst-hardened **BASE COAT** (prime paint) is applied
3. Base coat is **OVEN-CURED** for lasting durability
4. **HAND-APPLIED STAIN FINISH** formulated exclusively for Signet fiberglass doors
5. A layer of 2-part urethane, catalyst-hardened **CLEAR COAT WITH UV INHIBITORS** is applied
6. Clear coat is **OVEN-CURED** for lasting durability
7. The door is **HAND-SANDED**, preparing the surface for the second layer of clear coat
8. A second layer of 2-part urethane, catalyst-hardened **CLEAR COAT WITH UV INHIBITORS** is applied
9. The door is **OVEN-CURED** a second time, creating a long-lasting, durable finish

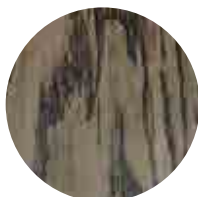
## Knotty Alder, Mahogany, Fir, Cherry & Oak Glazed Finishes *(Shown on Oak)*



Driftwood



Windy City



Natural Leather



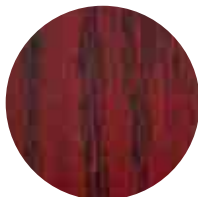
Dutch Gray



Winter Rain



Weathered Juniper



Red Velvet

## 15-YEAR FINISH WARRANTY\*

Embarq and Signet Fiberglass

\*Warranty time period may be limited in extreme exposure applications. See warranty for details.

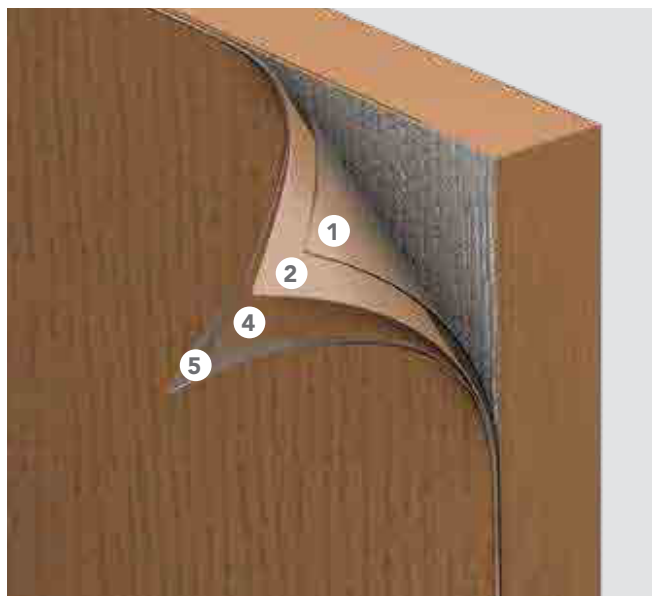
Glazed finishes may look slightly different depending on the skin species selected.

Always refer to our color selector for accurate color representation.

# LEGACY™ & HERITAGE™ STAIN FINISHES

## LEGACY STEEL

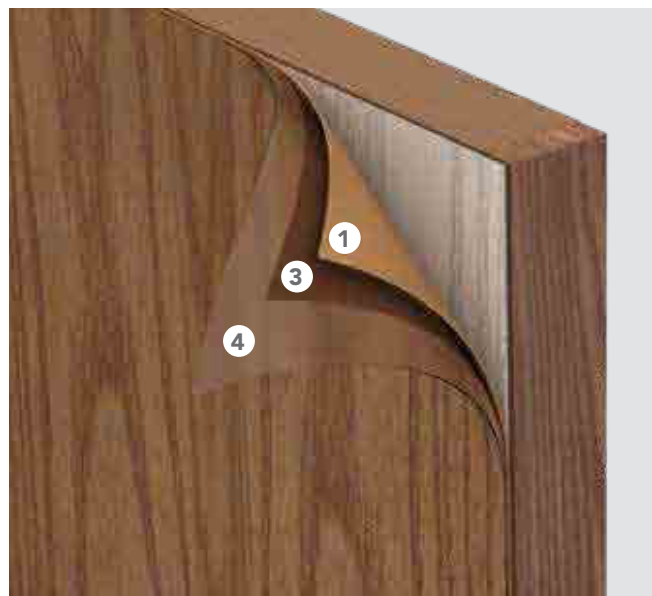
### 6-STEP STAIN FINISHING SYSTEM



1. Steel doors are **A40 Hot-dipped Galvannealed** (300% more coating thickness than 40Z full electrolytic zinc coated steel) to resist rust inside and out
2. A 2-part urethane, catalyst-hardened **BASE COAT** (prime paint) is applied by a robotic reciprocating paint system
3. Base coat is **OVEN-CURED** for lasting durability
4. **HAND-APPLIED STAIN FINISH** is added for enhanced beauty
5. A layer of 2-part urethane, catalyst-hardened **CLEAR COAT WITH UV INHIBITORS** is applied
6. The door is **OVEN-CURED** a second time, creating a long-lasting, durable finish

## HERITAGE FIBERGLASS

### 5-STEP STAIN FINISHING SYSTEM



1. A 2-part urethane, catalyst-hardened **BASE COAT** (prime paint) is applied by a robotic reciprocating paint system
2. Base coat is **OVEN-CURED** for lasting durability
3. **HAND-APPLIED STAIN FINISH** is added for enhanced beauty
4. A layer of 2-part urethane, catalyst-hardened **CLEAR COAT WITH UV INHIBITORS** is applied
5. The door is **OVEN-CURED** a second time, creating a long-lasting, durable finish

## Heritage & Legacy Stains *(shown on Legacy Woodgrain Textured)*



Natural Oak



Light Oak



Oak



Dark Oak



Walnut



Cherry



Dark Mahogany

### 10-YEAR FINISH WARRANTY\*

Heritage and Legacy Doors

\*Warranty time period may be limited in extreme exposure applications. See warranty for details.

Stain finishes may look slightly different depending on the skin species selected.

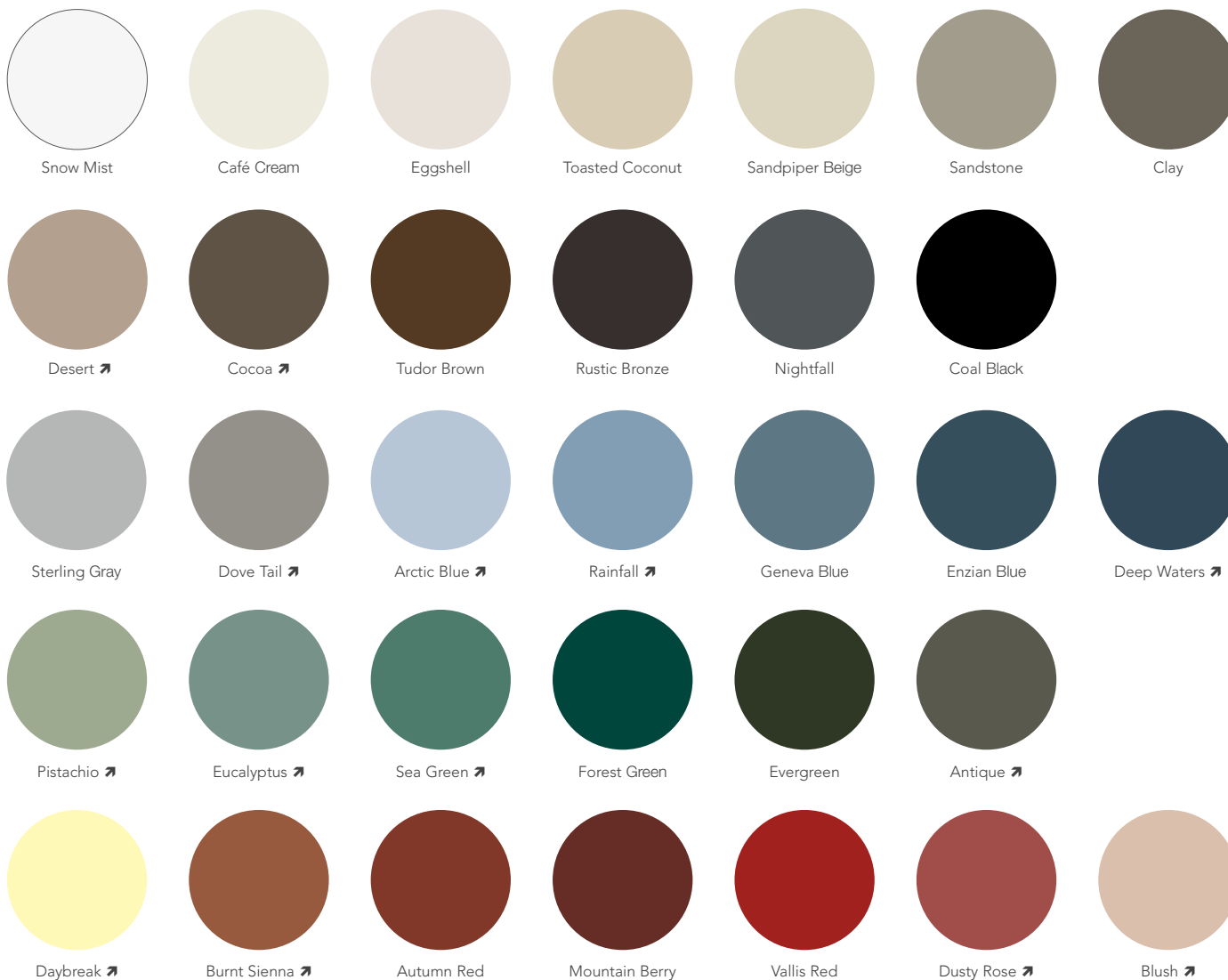
Always refer to our color selector for accurate color representation.

# PAINT FINISHES

## We do the finishing, so you don't have to.

You wouldn't try to paint a car yourself, so why should it be any different when it comes to staining or painting your entry door?

## EMBARQ®, SIGNET®, HERITAGE™, & LEGACY™ PAINT FINISHES



➤ Denotes Trending Color

Always refer to our color selector for accurate color representation.



### CUSTOM PAINT COLORS

Still searching for the perfect color? Custom color-matching is available on our Entry Doors.

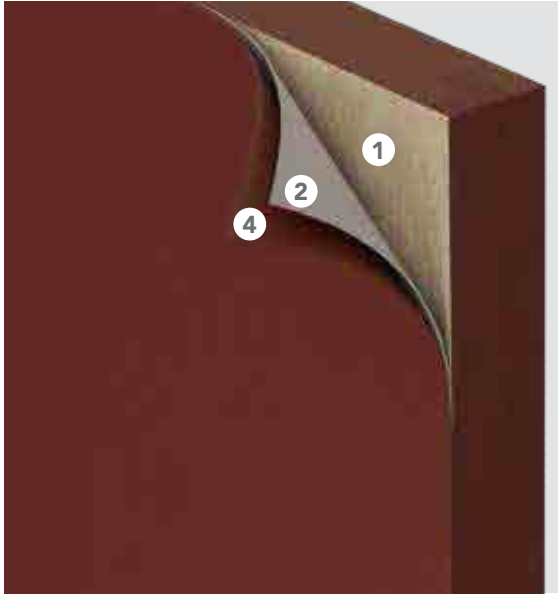
*Custom stains also available on Signet Fiberglass Entry Doors.*

*Additional lead-time required.*



## EMBARQ & SIGNET

### 5-STEP PAINT FINISHING SYSTEM



1. **DURAFUSE™** - Proprietary P<sup>3</sup> Fusion Preparation Processes ensuring unprecedented finish durability
2. A 2-part urethane, catalyst-hardened **BASE COAT** (prime paint) is applied by a robotic reciprocating paint system
3. Base coat is **OVEN-CURED** for lasting durability
4. The door is then coated with a 2-part urethane, catalyst-hardened **FINISH COAT**
5. The door is **OVEN-CURED** a second time, creating a long-lasting, durable finish

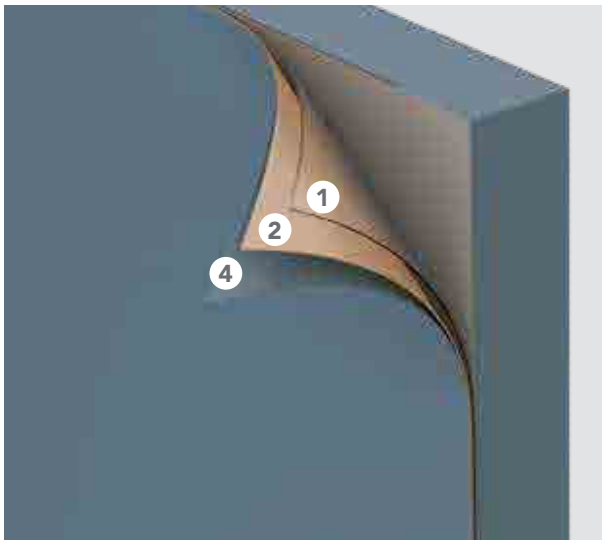
#### 15-YEAR FINISH WARRANTY\*

Embarq and Signet Fiberglass

\*Warranty time period may be limited in extreme exposure applications. See warranty for details.

## LEGACY

### 5-STEP PAINT FINISHING SYSTEM



1. Steel doors are **A40 Hot-dipped Galvannealed** (300% more coating thickness than 40Z full electrolytic zinc coated steel) to resist rust inside and out
2. A 2-part urethane, catalyst-hardened **BASE COAT** (prime paint) is applied by a robotic reciprocating paint system
3. Base coat is **OVEN-CURED** for lasting durability
4. The door is then coated with a 2-part urethane, catalyst-hardened **FINISH COAT**
5. The door is **OVEN-CURED** a second time, creating a long-lasting, durable finish

## HERITAGE

### 4-STEP PAINT FINISHING SYSTEM



1. A 2-part urethane, catalyst-hardened **BASE COAT** (prime paint) is applied by a robotic reciprocating paint system
2. Base coat is **OVEN-CURED** for lasting durability
3. The door is then coated with a 2-part urethane, catalyst-hardened **FINISH COAT**
4. The door is **OVEN-CURED** a second time, creating a long-lasting, durable finish

#### 10-YEAR FINISH WARRANTY\*

Heritage and Legacy Doors

\*Warranty time period may be limited in extreme exposure applications. See warranty for details.